

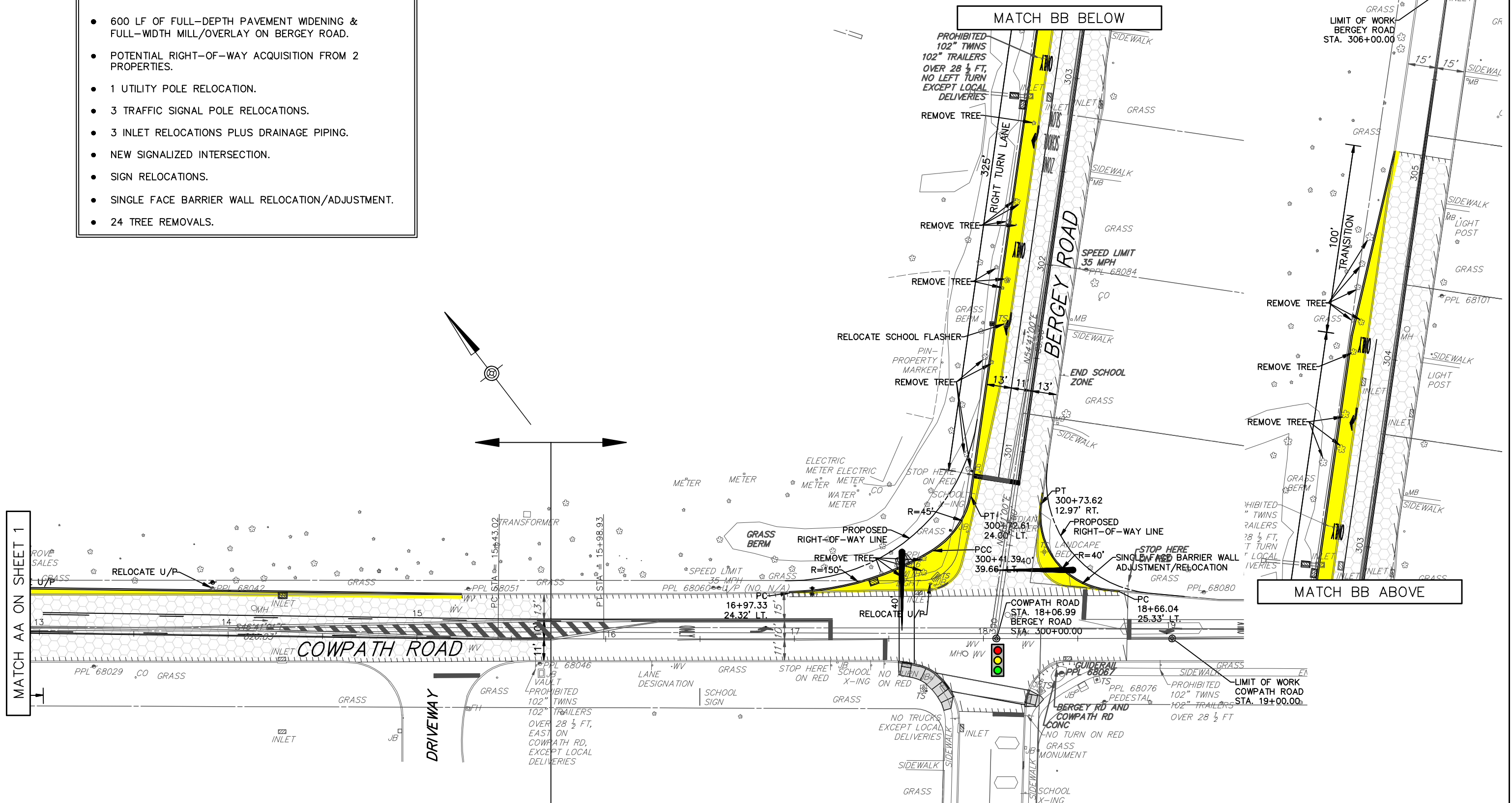
COWPATH/BERGEY IMPACT SUMMARY

- 600 LF OF FULL-DEPTH PAVEMENT WIDENING & FULL-WIDTH MILL/OVERLAY ON BERGEY ROAD.
- POTENTIAL RIGHT-OF-WAY ACQUISITION FROM 2 PROPERTIES.
- 1 UTILITY POLE RELOCATION.
- 3 TRAFFIC SIGNAL POLE RELOCATIONS.
- 3 INLET RELOCATIONS PLUS DRAINAGE PIPING.
- NEW SIGNALIZED INTERSECTION.
- SIGN RELOCATIONS.
- SINGLE FACE BARRIER WALL RELOCATION/ADJUSTMENT.
- 24 TREE REMOVALS.

MATCH AA ON SHEET 1

MATCH BB BELOW

MATCH BB ABOVE



SCALE



JOB NO: 811237
DWG: CONCEPT
DATE: 8/2/11

COWPATH ROAD/ DERSTINE ROAD/ BERGEY ROAD
INTERSECTION IMPROVEMENT PROJECT

HATFIELD TOWNSHIP

MONTGOMERY COUNTY

